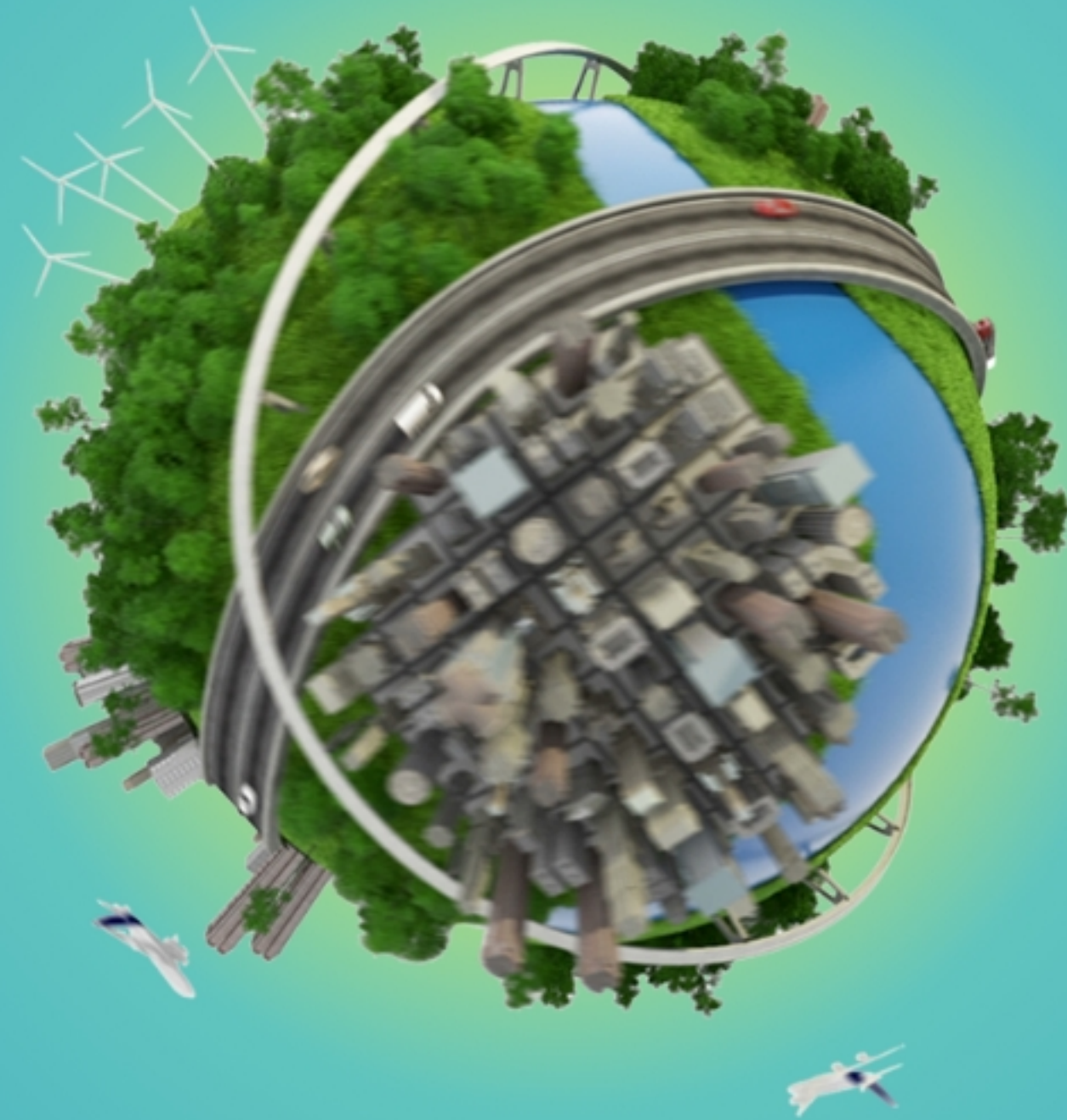




Sustainability

Build a more sustainable future, harnessing the power of technology.

Addressing global economic and societal crises while protecting our planet present some of the greatest challenges of our lifetime. But it's not too late to put together a future that allows everyone to not just survive—but thrive. For that, we need technology. Technology will help us better understand and minimize the impact of businesses on our planet. And technology will enable every company to fulfill a responsibility to manage change, think sustainably, and embrace change as an opportunity for growth. At Microsoft, sustainability isn't just something that we do from an operational standpoint—it's at the core of our business. We're committed to harnessing the power of technology to help everyone, everywhere, build a more sustainable future.



2021 progress

\$571M

Allocated \$471 million to date via our Climate Innovation Fund to accelerate our carbon goals, as well as water and waste. We also donated \$100 million to Breakthrough Energy's Catalyst initiative.



Carbon

2.5M tons

In FY21 and FY22, Microsoft successfully contracted to remove 2.5 million mtCO₂, meeting our cumulative two-year goal.

5.8 GW

In FY21, we signed new power purchase agreements (PPAs) for approximately 5.8 gigawatts (GW) of renewable energy across 10 countries around the globe.

87% supplier reporting

In July 2021, 87 percent of our in-scope suppliers reported their emissions to CDP, up 12 percent from 2020.

Microsoft Cloud for Sustainability

In July 2021, we launched the Microsoft Cloud for Sustainability to provide comprehensive, integrated, and automated sustainability management.

Water

1.3M m³

In FY21, Microsoft invested in replenishment projects that are expected to generate over 1.3 million cubic meters of volumetric benefits.

670M

Our programs with Water.org account for over 670 million liters⁹ of water benefit per year.



>95K people

Through our partnership with Water.org, we provided more than 95,000¹⁰ people with access to safe water or sanitation.

U.S. Water Prize

In 2021, Microsoft was awarded the U.S. Water Prize for Outstanding Private Sector Organization for adopting our water positive program and committing to being water positive by 2030.

Waste

Circular Centers

We have planned five Circular Centers, with Amsterdam open, construction underway in Boydton, Virginia, and three more to be added in 2022.

>15,200 tons

In FY21, we diverted more than 15,200 metric tons of solid waste otherwise headed to landfills and incinerators.

Zero Waste

Four datacenters are Zero Waste certified, with new certifications for the San Antonio, Texas and Quincy.

18% reduction

We reduced single-use plastics in our Microsoft product packaging by 18 percent.

Ecosystems

>17,000 acres

In FY21, we contracted to protect more than 17,000 acres of land.



>500 users

The Planetary Computer private preview released as planned in April 2021, with more than 500 users signed up and using the APIs and scalable compute.

24 petabytes

We have made available 24 petabytes of data with more than 30 key environmental and Earth observation datasets to Azure in consistent, analysis-ready format that is freely available for use by anyone.

850+ grants

Since its inception in 2017, our AI for Earth program has provided more than 850 grants to organizations working in 110 countries around the world, granting more than \$20 million in Azure credits.



Reduce Environmental Impact of Operations

Microsoft Cloud for Sustainability

Build a Sustainable IT Infrastructure

Unify Data Intelligence

Create Sustainable Value Chains

Build a Sustainable IT Infrastructure



Schneider Electric EcoStruxure Resource Advisor is a solution to manage your energy and sustainability footprint. This platform enables companies to collect, analyze and automate information that matters for your sustainability goals.



[Learn more](#)



Smart Buildings

The experience demonstrates the power of Azure IoT, App Services, Dynamics Field Services & Teams to communicate and collaborate with remote teammates which results in many benefits customers will realize.



[Learn more](#)



wood.

Wood ENVision provides real-time insight into emissions and carbon releases by streamlining and automating diverse types of data to provide a clear, auditable and accurate view of emissions from any asset, organization or city.



[Learn more](#)



Blue Yonder is the world's leading end-to-end platform for supply chain and logistics providers to fulfill customer demand. Potential™



Blue Yonder

Luminate Control Tower

 **BlueYonder**
Luminate Control Tower

Blue Yonder's Luminate Control Tower (LCT) is a next-gen SaaS solution powering end to end visibility of your supply chain for faster, more accurate, and more informed decision-making.

[Learn more](#)

Luminate Demand Edge

 **BlueYonder**
Luminate Demand Edge

Blue Yonder's Luminate Demand Edge (LDE) is a next-gen SaaS solution that extends and enhances Blue Yonder's industry-leading planning solutions to deliver game-changing, autonomous forecast accuracy.

[Learn more](#)

Story/Solution Name

Overview description Lorem ipsum dolor sit amet, consetetur sadipscing elitr, sed diam nonumy eirmod tempor invidunt ut labore et dolore magna aliquyam erat, sed diam voluptua. At vero eos et accusam et justo duo dolores et ea rebum. Stet clita kasd gubergren, no sea takimata sanctus est Lorem ipsum dolor sit amet. Lorem ipsum dolor sit amet, consetetur sadipscing elitr, sed diam nonumy eirmod tempor invidunt ut labore et dolore magna aliquyam erat, sed diam voluptua.

Story Name



1 of 5



← Sustainability

Overview

Solution

Partnership

Architecture
Diagram

Key
Takeaways

Interactive
Demo

Video Demo

Partnering with Customers

Carbon

Lorem ipsum dolor sit amet, consetetur sadipscing elitr, sed diam nonumy eirmod tempor invidunt ut labore et dolore magna

Customer Logo

Featured Customer

Customer Logo

Customer Logo

Customer Logo

Customer Logo

Water

Lorem ipsum dolor sit amet, consetetur sadipscing elitr, sed diam nonumy eirmod tempor invidunt ut labore et dolore magna

Customer Logo

Featured Customer

Customer Logo

Customer Logo

Customer Logo

Customer Logo

Waste

Lorem ipsum dolor sit amet, consetetur sadipscing elitr, sed diam nonumy eirmod tempor invidunt ut labore et dolore magna

Customer Logo

Featured Customer

Customer Logo

Customer Logo

Customer Logo

Customer Logo

Ecosystems

Lorem ipsum dolor sit amet, consetetur sadipscing elitr, sed diam nonumy eirmod tempor invidunt ut labore et dolore magna

Customer Logo

Featured Customer

Customer Logo

Customer Logo

Customer Logo

Customer Logo

