



DESIGN GUIDELINE

UI Navigation

Font weight

Segoe UI Regular

Segoe UI Semibold

Font sizes

H1 - Submenu title - Semibold - 117pt

H2 - Not currently used - Semibold - 72pt

B1 - Subhead/Nav Tabs/Map Buttons - Semibold - 45pt

B2 - Body copy - Regular - 27pt

B2

B1

H2*

H1

27

45

72

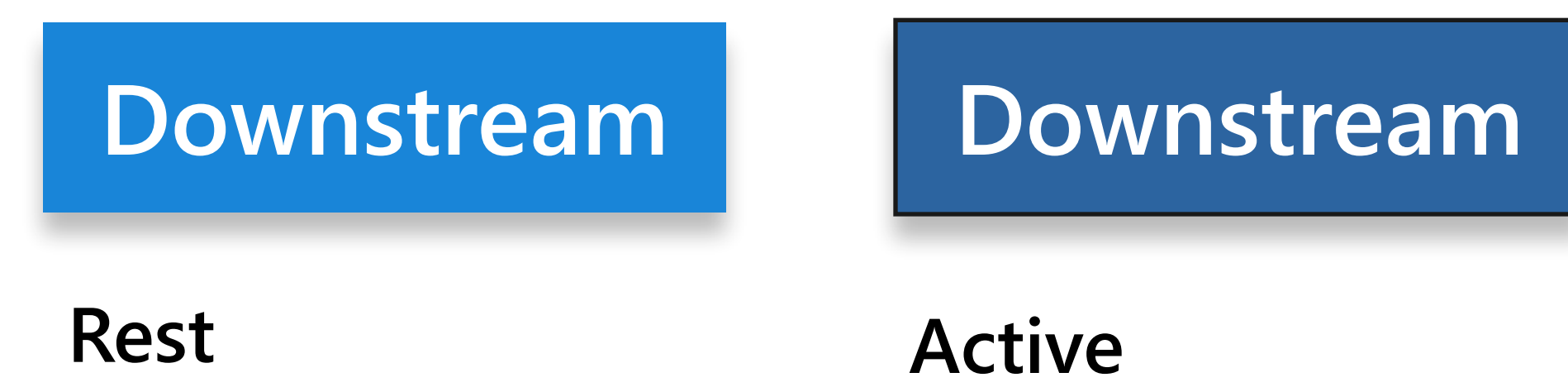
117

Note - Sizes are provided as a guide. Actual size in FourWinds Application may need to be visually adjusted to match this document..

Buttons & Cards

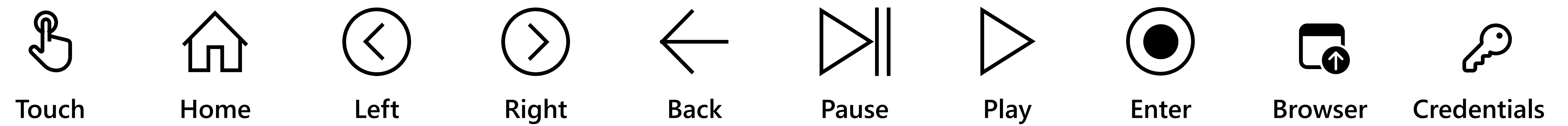
Map buttons

Font: B1
Shadow: X:0, Y:10, B:10
Rest: #0078D4
Active: #165496 - 2px black border

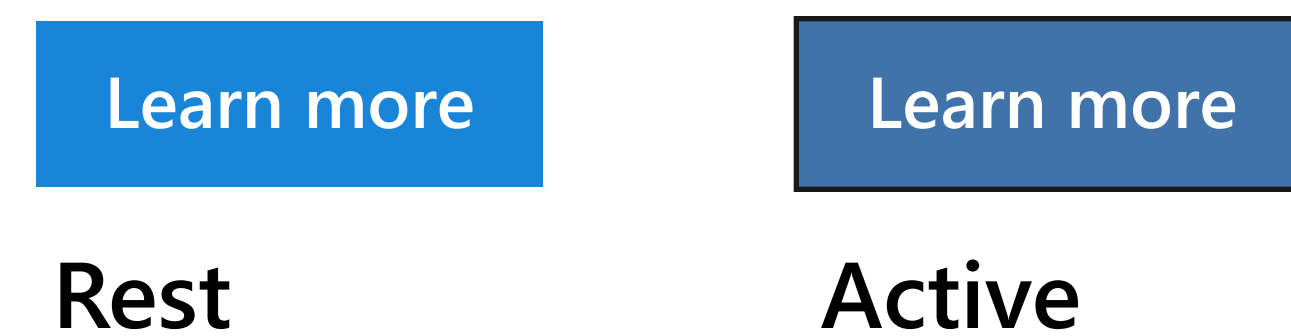
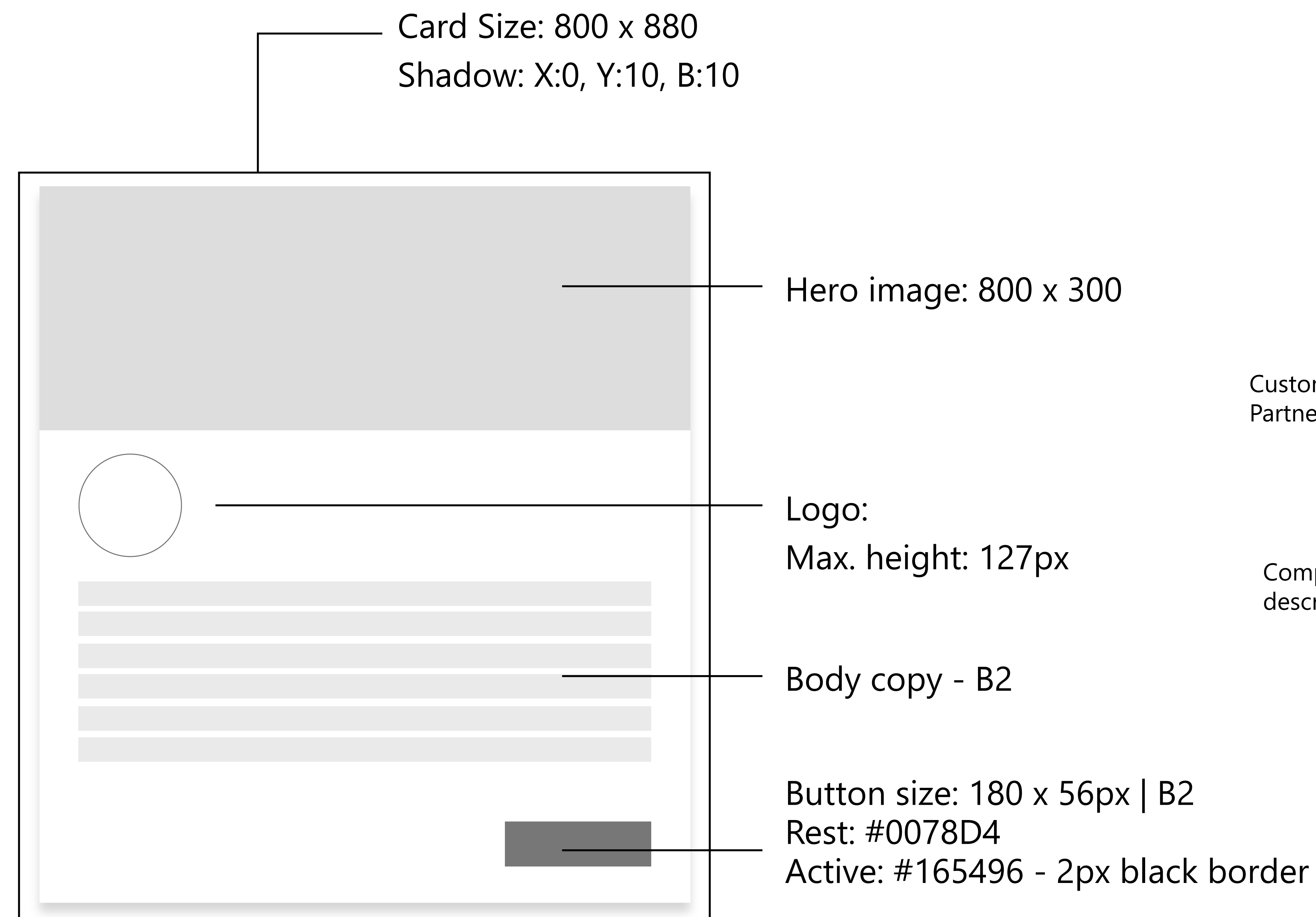


UI Icons

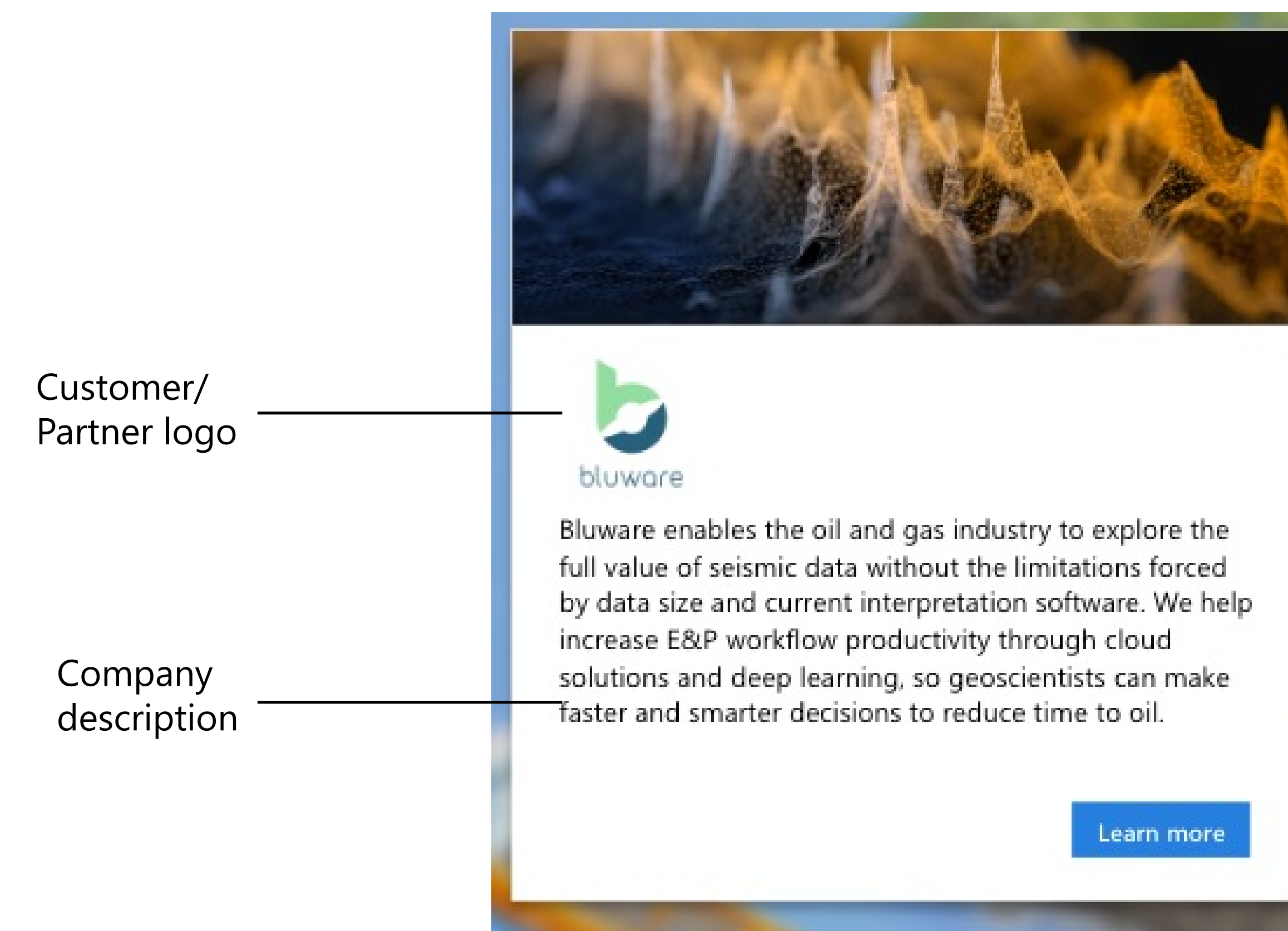
Monoline icons - Microsoft security marketing guidelines, April 2021



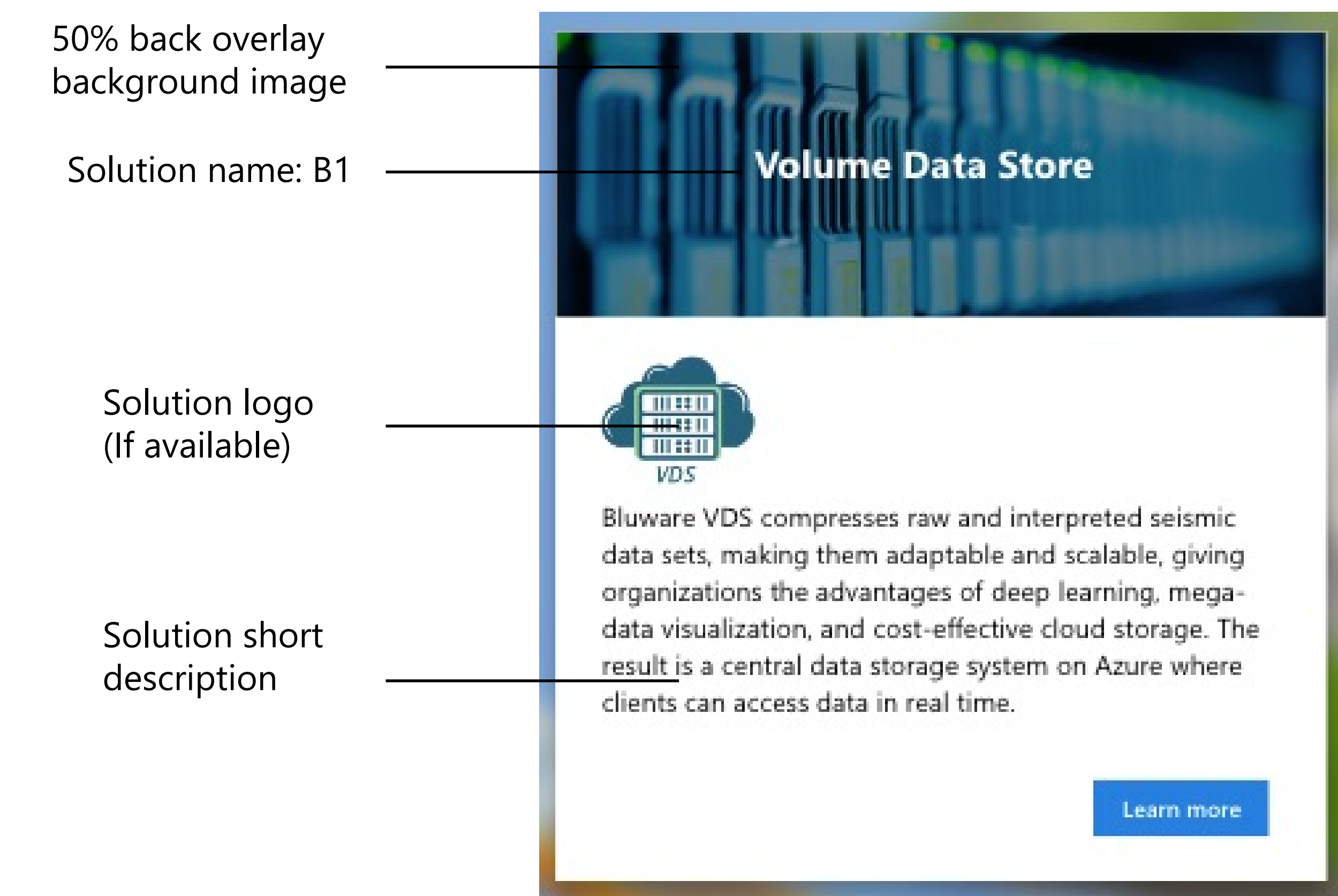
Cards



Customer/partner cards



Solution cards



Colors

UI Colors

The below colors are used in all industries and uses for basic UI elements such as fonts, buttons & etc.

Standard



BLUE
#1885D8

DARK BLUE
#165496

BLACK
#000000

Industry Specific Colors

The industry colors are chosen based on Microsoft approved colors guides. The larger color indicates the main industry color and the other colors are used for industry label area, highlight, active and selected states of the lower navigation.

Energy



SELECTED #121D2F LABEL #1D2E4B MAIN #004880 ACTIVE #40CDF5

Retail



SELECTED #6B1D0D LABEL #AD2F16 MAIN #D83B1C ACTIVE #FF8C2B

Public Sector



SELECTED #48070D LABEL #740E16 MAIN #9C2814 ACTIVE #F23948

Manufacturing



SELECTED #CD9529 LABEL #E5A62D MAIN #FFBA33 ACTIVE #FFF880

Healthcare



SELECTED #00423A LABEL #006B5E MAIN #008575 ACTIVE #40C5AF

Financial Services



SELECTED #420B31 LABEL #6B144F MAIN #851963 ACTIVE #EA40A9

Automotive



SELECTED #073E0D LABEL #0C6316 MAIN #0F7C1B ACTIVE #D7F04B

Media & Communications



SELECTED #2E1648 LABEL #4A2474 MAIN #5C2D91 ACTIVE #A579D6

Layout

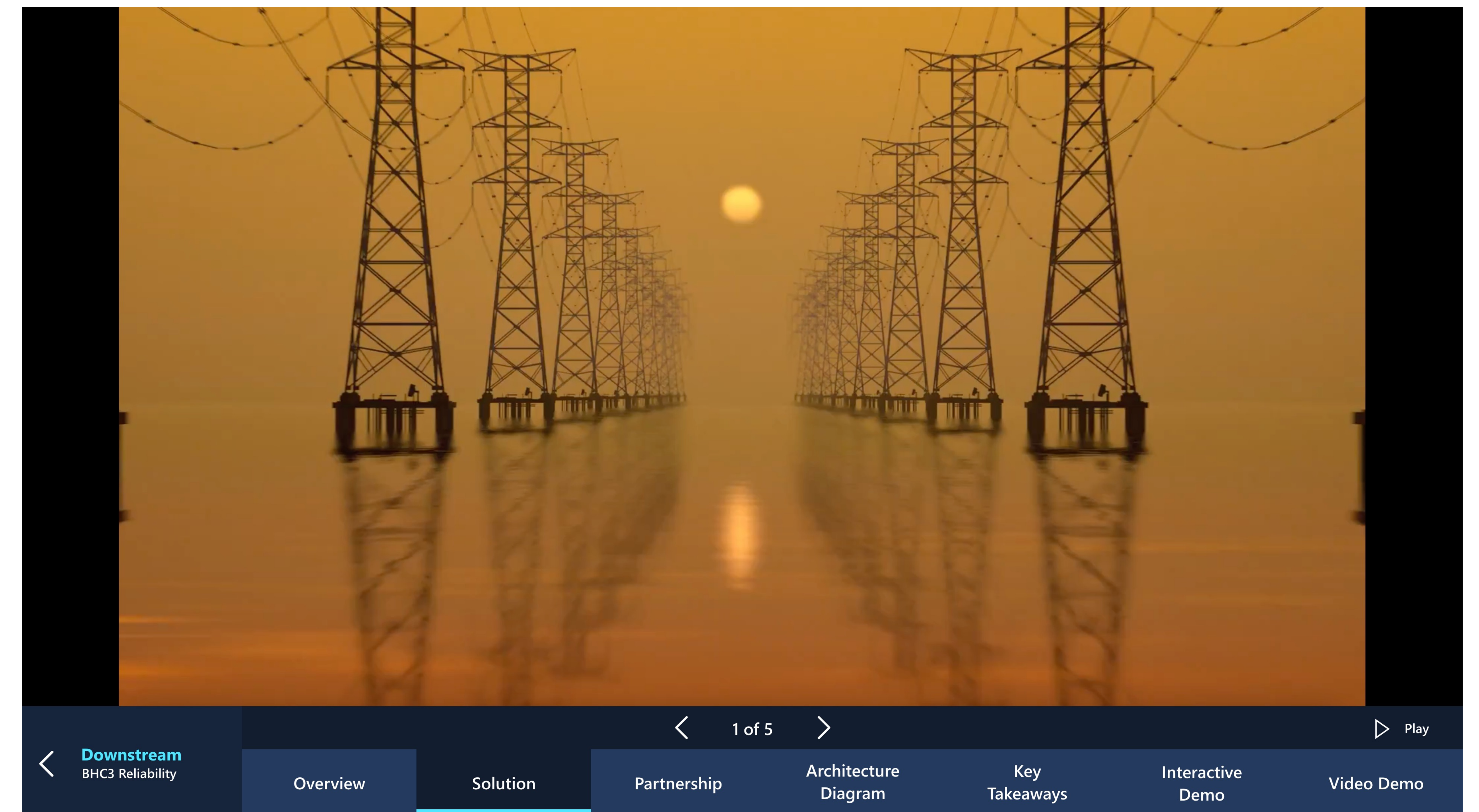
There are two levels of lower navigation. The first is the Map level, which has tabs for each areas represented on the map. The second level of navigation is the Story Presentation level, which has tabs for individual sections of the story which corresponding to the Powerpoint.

Each selected Story level tab have buttons and info that display above it such as page counter and play/pause buttons that are related to the content presented.

Main Menu (Mega Map Level)



Presentation Navigation



NOTE: Maximum number of Tabs is seven, but not all stories will feature all seven. When required extend tabs width to fill space but do not increase font or icon size.

Dual aspect ratios presentation example

The presentations have been designed so that one size will appear full screen with the dual aspect ratios. Below is an example of how the same presentation will display at both the 16:9 and 3:2 aspect ratios.

See the Info Presentation Deck guide for more on the Powerpoint Template.

3840 x 2160 (4K)



16:9 ratio - The navigation bar is ovetop of the image resulting in some bleed of the image behind the navigation. Because of this a safe space has been created in the Powerpoint Template and it is advised to keep all important information above the navigation.

3840 x 2560 (Surface Hub 2S-50")

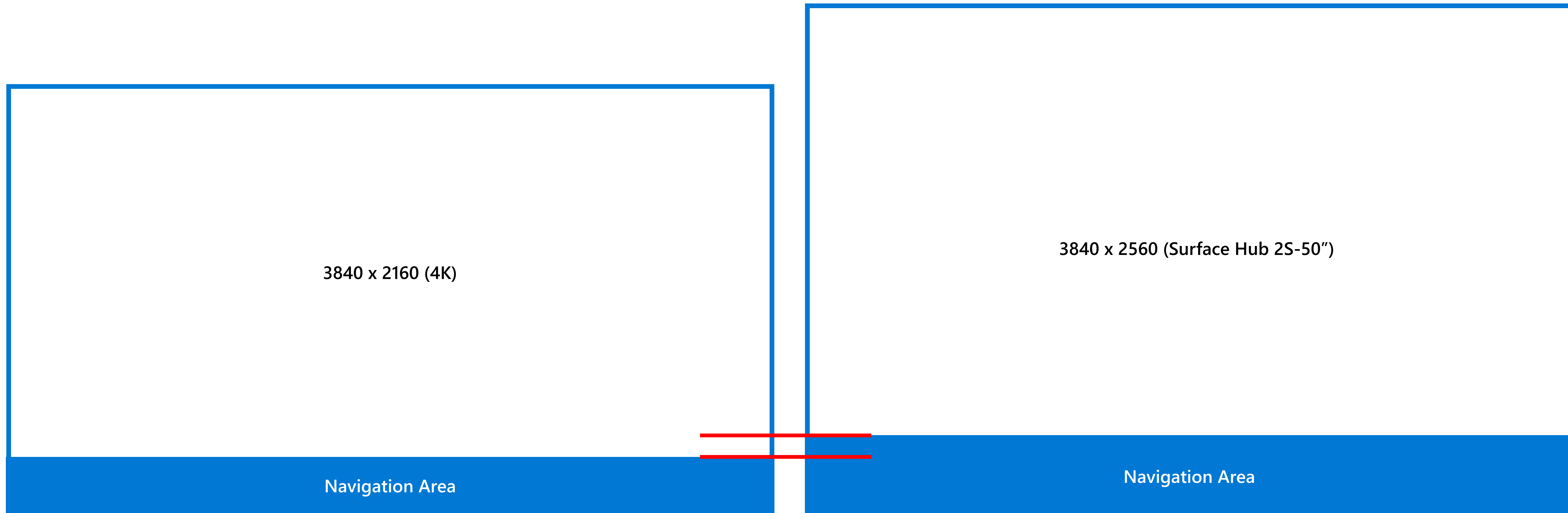


3:2 ratio - The navigation bar will start below the image and expand to fill the space below. The result is that the full Powerpoint is shown with no bleed or overlap by the navigation.

Screen ratios & navigation

The current navigation design supports two screen aspect ratios (16:9) and (3:2).

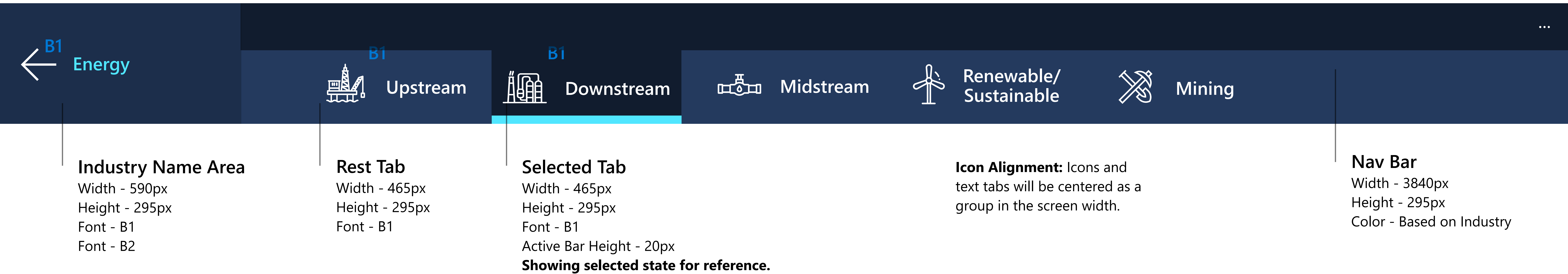
Because the two ratios have different sizes the lower navigation will need to be built at two different heights in order to fill the screen space. The following pages will call out the specific sizes.



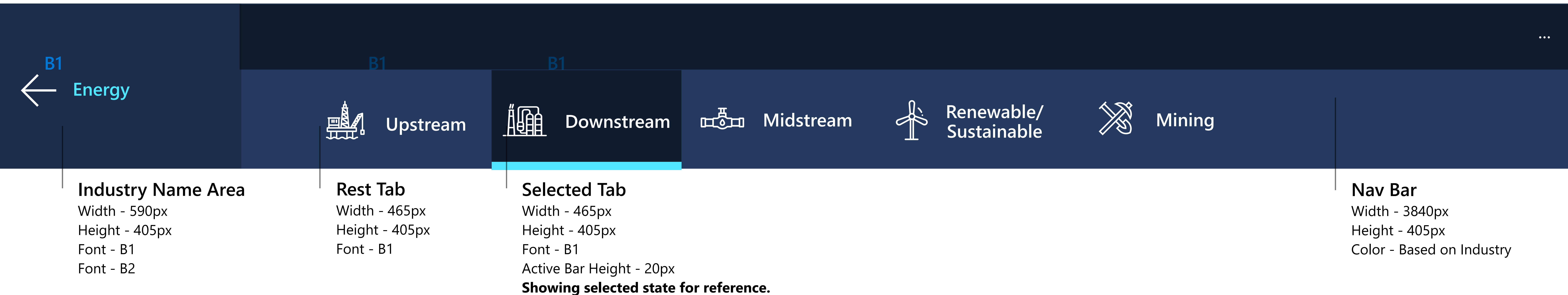
Lower navigation

Main Navigation Bar 16:9 (Mega Map Level)

The Energy navigation flow has been used as an example. Map sections and customer names/solutions will vary with industry.



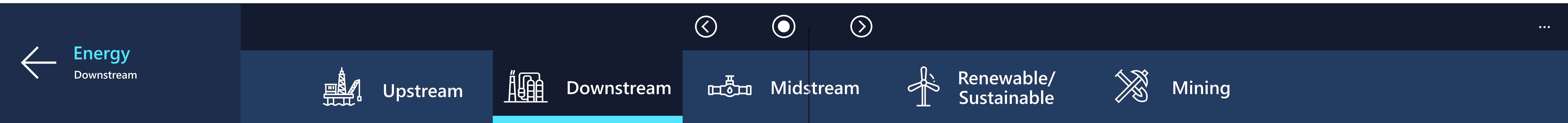
Main Navigation Bar 3:2 (Mega Map Level)



Lower navigation

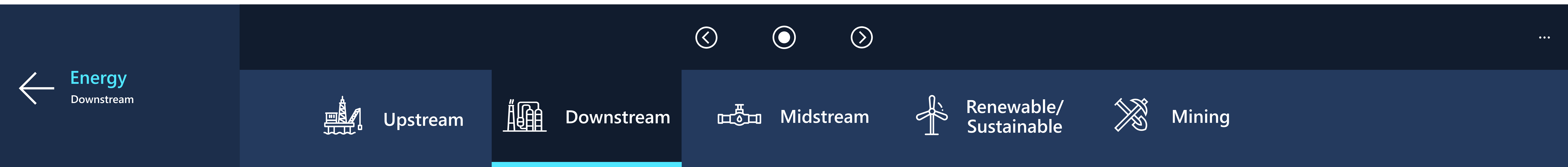
Submenu Navigation Bar 16:9 (Card Level)

The Energy navigation flow has been used as an example. Map sections and customer names/solutions will vary with industry.



Control Bar Selection
Used on sub menu for
accessibility.

Submenu Navigation Bar 3:2 (Card Level)



Selected Tab
Width - 465px
Height - 245px
Font - B1
Active Bar Height - 20px

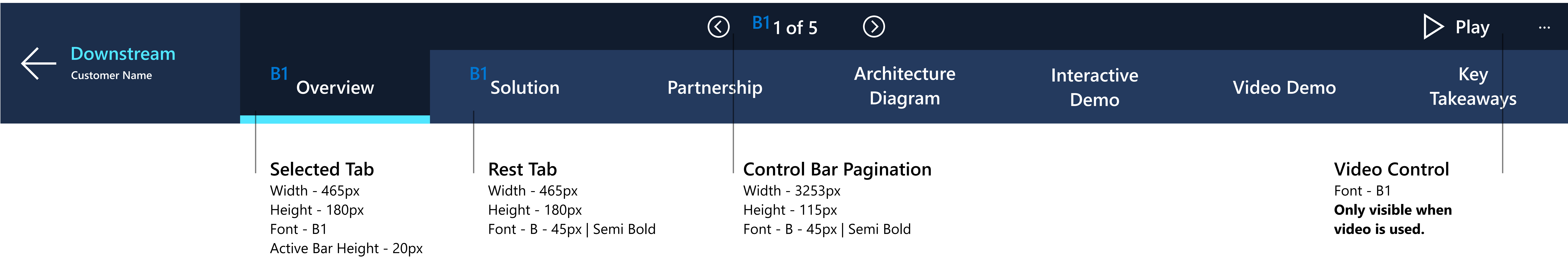
Rest Tab
Width - 465px
Height - 245px
Font - B1

Control Bar Selection
Used on sub menu for
accessibility.

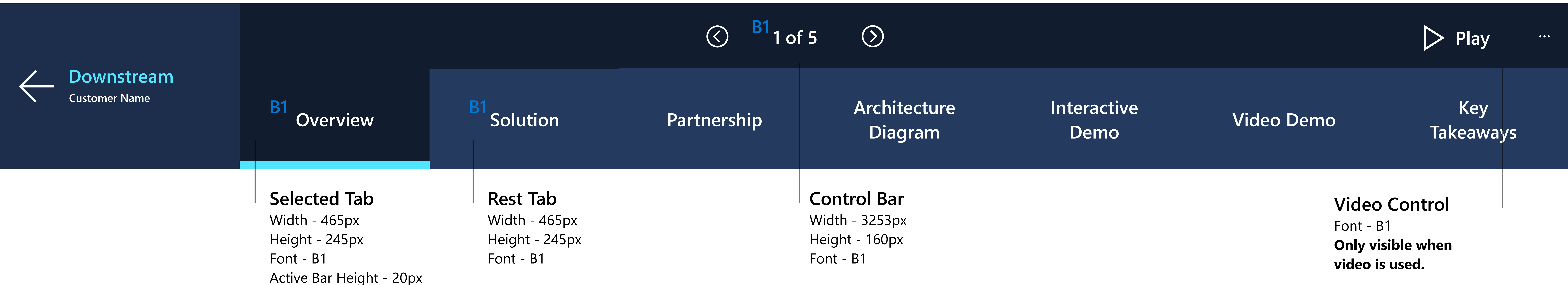
Lower navigation

Solution Navigation Bar 16:9 (Story Level)

The Energy navigation flow has been used as an example. Map sections and customer names/solutions will vary with industry.



Solution Navigation Bar 3:2 (Story Level)



Lower navigation

Case Study Navigation Bar 16:9 (Less Tabs)

The navigation bar for a 16:9 aspect ratio features five tabs: 'Solution Case Study', 'B1 Overview', 'B1 Architecture Diagram', 'Video Demo', and 'Play'. The 'Overview' tab is selected, indicated by a cyan underline. The 'Play' button is visible on the right. The bar includes back and forward navigation arrows and a 'B1 1 of 5' indicator.

Tab Alignment: Tabs would be aligned left but keep the same width when number of tabs is reduced.

Selected Tab
Width - 465px
Height - 180px
Font - B1
Active Bar Height - 20px

Rest Tab
Width - 465px
Height - 180px
Font - B - 45px | Semi Bold

Control Bar
Width - 3253px
Height - 115px
Font - B - 45px | Semi Bold

Video Control
Font - B1
Only visible when video is used.

Case Study Navigation Bar 3:2 (Less Tabs)

The navigation bar for a 3:2 aspect ratio features three tabs: 'B1 Overview', 'B1 Architecture Diagram', and 'Video Demo'. The 'Overview' tab is selected, indicated by a cyan underline. The 'Play' button is visible on the right. The bar includes back and forward navigation arrows and a 'B1 1 of 5' indicator.

Selected Tab
Width - 465px
Height - 245px
Font - B1
Active Bar Height - 20px

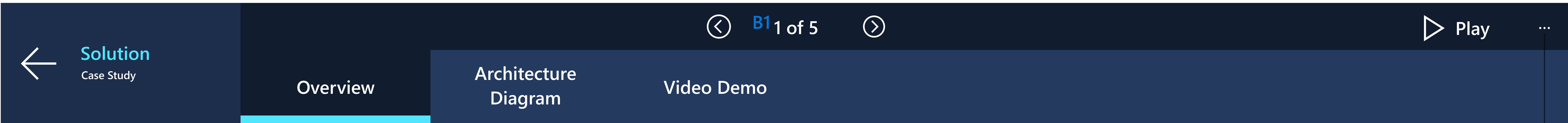
Rest Tab
Width - 465px
Height - 245px
Font - B1

Control Bar
Width - 3253px
Height - 160px
Font - B1

Video Control
Font - B1
Only visible when video is used.

Lower navigation

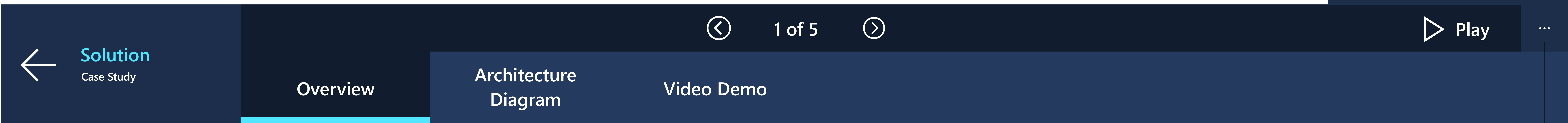
Additional Menu - Rest



Tab Alignment: Tabs would be aligned left but keep the same width when number of tabs is reduced.

Additional Menu
Visible at every nav level.
Width - 115px
Height - 115px
Hex# - 121D2F
Centered "... " Icon

Additional Menu - Active



Additional Menu
Visible at every nav level.
Hex# Active State - 1D2E4B
Centered "... " Icon

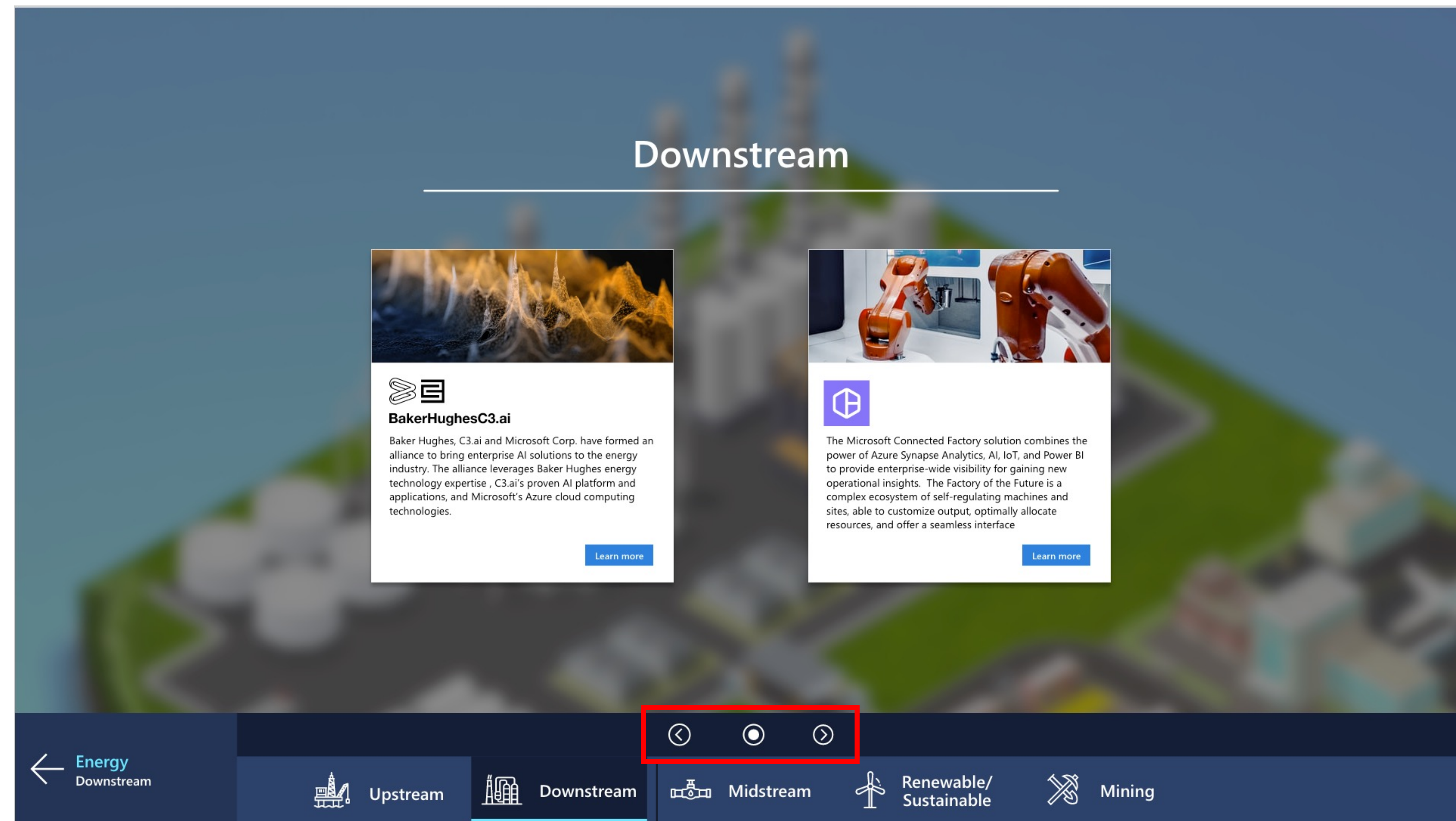
Lower navigation

Submenu Navigation Bar Accessibility Selector Function

Upon landing on a screen NO card should be highlighted so that we do not spotlight one card solution over another.

In the case that the user needs to use the lower navigation selector it is important to provide a visual cue on which card is selected. To do provide a visual cue, a stroke should be added to the selected card. The stroke should ONLY appear once the user touches the lower nav selector area.

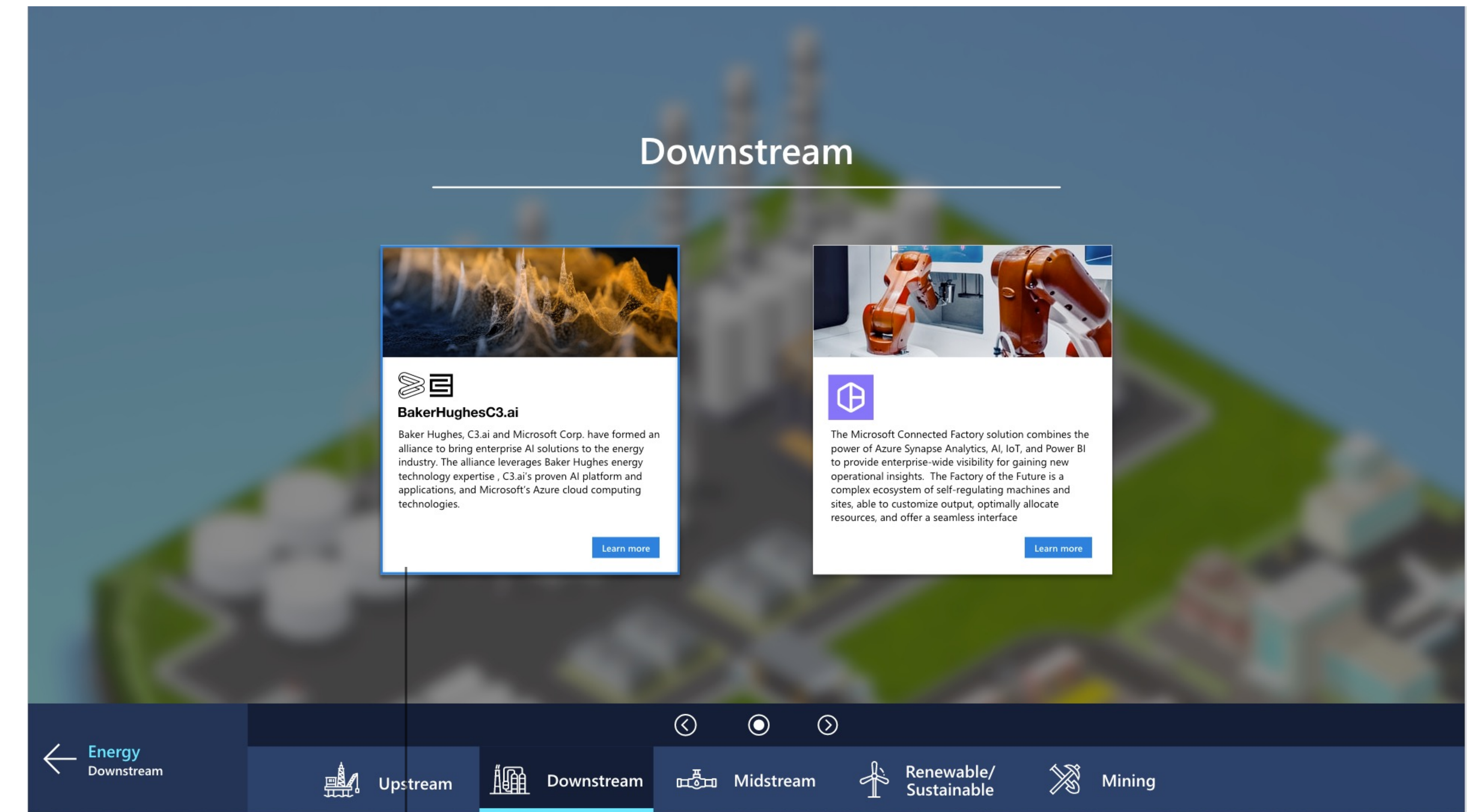
No card selected (normal state)



Accessibility Selector Area

When user touches this area the default card on the left will highlight with a Blue stroke. (Red stroke for reference only)

Accessibility selector card highlight



Selected Card Indicated

Stroke - 6px
Color - #1885D8

Lower navigation

Industry Color Examples

The navigation bars shown here are for color reference only. They show the current and future examples of industry color applied to navigation a sample navigation.

See pages above for more updated navigation features and tabs.



Lower navigation

Tap to start (Attract Loop Screen)

Instructional tap to start area is displayed at the bottom of the attract loop video. The tap to start areas takes up the same height as the lower navigation.

Tap to start bar (16:9)

Width - 3840px
Height - 295px
Font - H2
Color - #ffffff | 90% opacity

Tap to start bar (3:2)

Width - 3840px
Height - 405px
Font - H2
Color - #ffffff | 90% opacity



Tap to start bar



Background treatment

Map background acrylic material

Preparation for development

Background treatments are made up of two parts, a map graphic and a overlay treatment.

Creating acrylic material treatment

Tint - black #000000

Blur - 20 px

Brightness: 15

Opacity: 60%

Preparation for development

Current the build of this treatment will need to be applied in design and delivered as one image (map/overlay) and delivered with treatment to development team.



Map graphic

Acrylic overlay treatment

FourWinds Site Map & Navigation

To guide the FourWinds development team in building the experience you should create a site map and content navigation document.

Site Map

It is recommended to create a site map to accompany the Content Navigation document as well to guide the team in building the industry experience.

Navigation Document Template

Use this template to fill in the structure of the stories in the Fourwinds experience. Fill in the Story Name and the summary intro text for the cards in FourWinds. Make sure to list which category and or upper level card they fall under.

Content Navigation Template

Sector: Content Navigation

Category / IPS - Menu Sub category Partner Solutions

Main Menu: <Insert Category or IPS Name Here>

Sub Category: <Insert Subcategory Name Here>

1. <Insert Partner/Solution Name Here> - Overview
Card Title: <Insert Title Displayed on Card>
Card Text: <Insert A short paragraph overview of the solution>
 - a. <Insert Sub Menu Solution Name> - Overview
Card Title: <Insert Title Displayed on Card>
Card Text: <Insert A short paragraph overview of the solution>
 - b. <Insert Sub Menu Solution Name> - Overview
Card Title: <Insert Title Displayed on Card>
Card Text: <Insert A short paragraph overview of the solution>
2. <Insert Partner/Solution Name Here> - Overview
Card Title: <Insert Title Displayed on Card>
Card Text: <Insert A short paragraph overview of the solution>

Example of Site Map

Automotive content navigation (6/9/2021)

Category / IPS - Menu Sub category Partner Solutions

